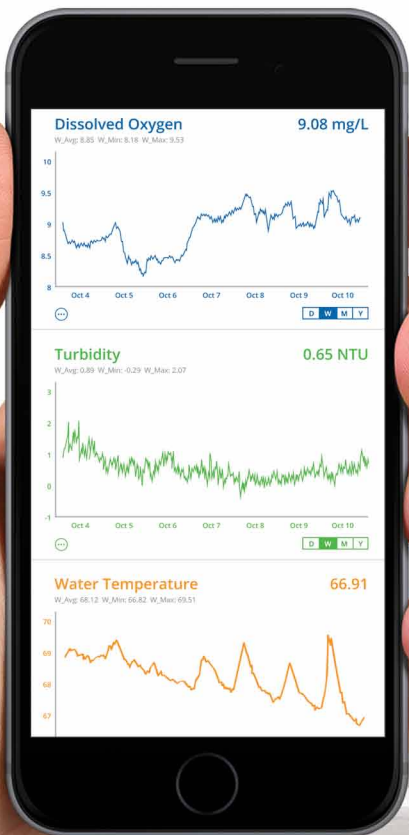


WQData LIVE

WEB DATACENTER

- 24/7 instant access to project data
- 2-way communication with remote systems
- Secure, password-protected site
- Interactive Google Map interface
- View & download tabular and graphical data



WQData LIVE is a web-based project management service that allows users 24/7 instant access to data collected from remote telemetry systems. Users with NexSens G2, X2 and V2 platforms have the ability to configure and update systems remotely via Wi-Fi, Ethernet, cellular or satellite telemetry. All projects are password-protected with multi-level access. Administrators have full access for remote communication and project modification, while collaborators are limited to viewing and exporting data.

The online database offers the ability to view live readings, configure alerts to notify project personnel when data values exceed threshold limits, export data and more. The project dashboard includes a Google Maps view showing all project sites on a map with zoom, scroll and drag capability. The bottom of the dashboard includes a project overview, data disclaimer and project photo. For projects with multiple locations, each site within a project shows the data loggers connected along with a site photo in a convenient viewing pane.

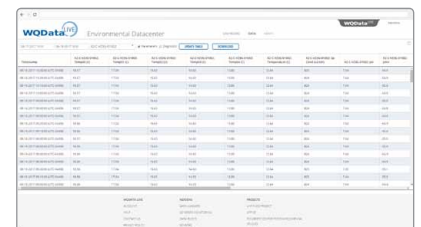
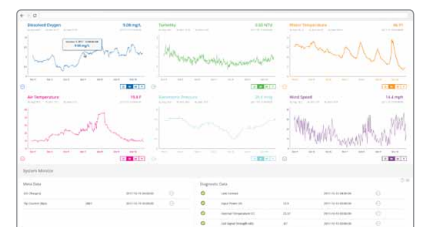
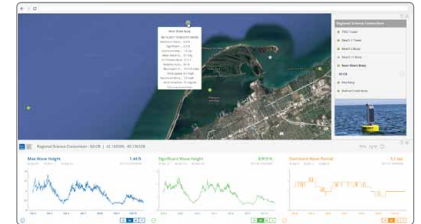
Clicking on any site within a project displays the most recent data values alongside a graph depicting a day, week, month or year of data. Within each parameter, users can register to receive alerts via email based on a high or low threshold. A rich set of meta data and diagnostic data specific to each site is displayed at the bottom for troubleshooting sensor or data logger issues. With this rich set of tools, **WQData LIVE** simplifies the task of managing an environmental monitoring project.

WQData LIVE

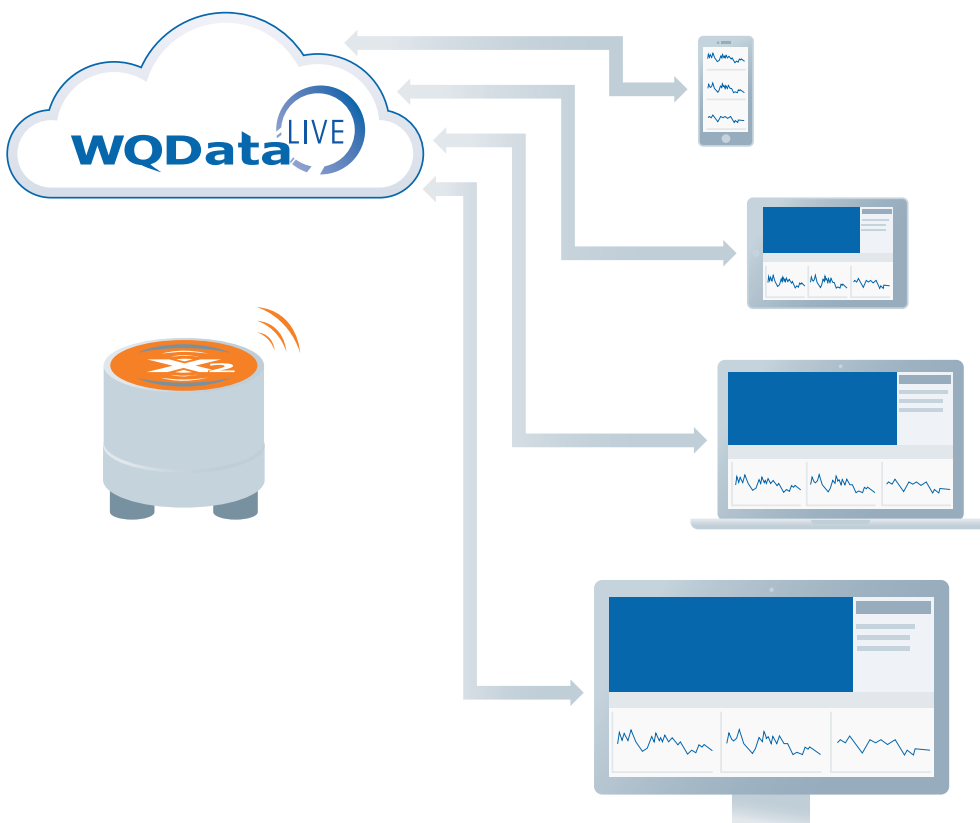
WEB DATACENTER

notable features

Dashboard	Serves as the homepage for WQData LIVE visitors. Project administrators can locate sites on the map, edit the Project Description, Project Photo and Data Disclaimer, and post a logo into the website header.
Map	Uses Google Maps' interface to display geographical location of project sites. Users can scroll and zoom through the map and click on sites to see the most recent data.
Sites	Clicking on a mapped site or navigating to the Sites view shows the most recent measurement data, meta data for the sensors, and diagnostic data for the logger.
Alerts	Users can be notified via email when a parameter (high or low) threshold is exceeded within a certain period of time.
Data	View and download historical data in table form. Select the date range, data logger, and whether to include diagnostic data before downloading to a .csv file.
Administrator	Project administrators can add users as administrators or collaborators, configure the contents of the website, and manage sites and data displays.



Site ID	Parameter	Value	Unit	Timestamp
001	Flow	1.2	ft ³ /min	2013-01-01 10:00:00
001	Temperature	65	F	2013-01-01 10:00:00
001	pH	7.5		2013-01-01 10:00:00
001	Dissolved Oxygen	8.5	mg/L	2013-01-01 10:00:00
001	Electrical Conductivity	150	µS/cm	2013-01-01 10:00:00
001	Total Suspended Solids	10	mg/L	2013-01-01 10:00:00
001	Total Phosphorus	0.1	mg/L	2013-01-01 10:00:00
001	Total Nitrogen	0.5	mg/L	2013-01-01 10:00:00
001	Ammonia Nitrogen	0.1	mg/L	2013-01-01 10:00:00
001	Nitrate Nitrogen	1.0	mg/L	2013-01-01 10:00:00
001	Orthophosphate	0.05	mg/L	2013-01-01 10:00:00
001	Chlorophyll a	1.0	µg/L	2013-01-01 10:00:00
001	Secchi Depth	1.0	ft	2013-01-01 10:00:00
001	Water Level	10.0	ft	2013-01-01 10:00:00
001	Water Temperature	65	F	2013-01-01 10:00:00
001	Water pH	7.5		2013-01-01 10:00:00
001	Water Dissolved Oxygen	8.5	mg/L	2013-01-01 10:00:00
001	Water Electrical Conductivity	150	µS/cm	2013-01-01 10:00:00
001	Water Total Suspended Solids	10	mg/L	2013-01-01 10:00:00
001	Water Total Phosphorus	0.1	mg/L	2013-01-01 10:00:00
001	Water Total Nitrogen	0.5	mg/L	2013-01-01 10:00:00
001	Water Ammonia Nitrogen	0.1	mg/L	2013-01-01 10:00:00
001	Water Nitrate Nitrogen	1.0	mg/L	2013-01-01 10:00:00
001	Water Orthophosphate	0.05	mg/L	2013-01-01 10:00:00
001	Water Chlorophyll a	1.0	µg/L	2013-01-01 10:00:00
001	Water Secchi Depth	1.0	ft	2013-01-01 10:00:00
001	Water Level	10.0	ft	2013-01-01 10:00:00



tel: **937.426.2703**
8am to 7pm EST, Monday-Friday

fax: **937.426.1125**

NexSens Technology, Inc.
2091 Exchange Court
Fairborn, OH 45324
info@nexsens.com

nexsens.com